



FOREVER BOUND ALBUMS ARE CRAFTED AND REFINED USING THE WORLD'S MOST DURABLE AND EXQUISITE MATERIALS. THE SUPERB CRAFTSMANSHIP RESULTS IN AN ENGAGING AND EMOTIONAL DESIGN.

## LEATHERETTE

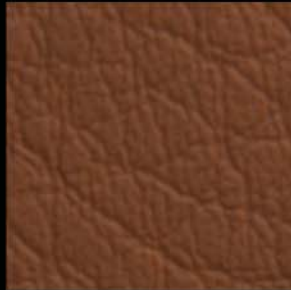
A cut above in design and technology, leatherette is a state of the art material that provides long term durability.



Black



Merlot



Cinnamon



Elephant



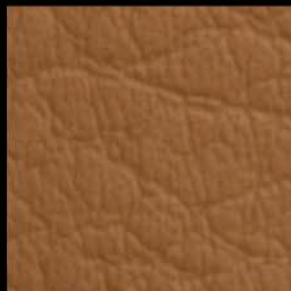
Camel



Cerulean



Bordeaux



Luggage



Gravel



Bone

# GENUINE LEATHER

Forever Bound Albums feature the highest quality, most supple and longest lasting grades of leather available. You may upgrade to leather, distressed, or specialty leather for an additional cost.

\* Distressed Leather Upgrades \*\* Specialty Leather Upgrades



Black



Coffee Brown



Cinnamon Brown



Spice Tan



Tan



Graphite Gray



Ocean Blue



Onyx Green



Ivory



Flour White



Red



Deep Wine



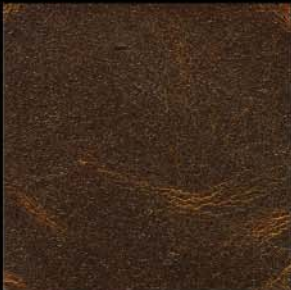
Burgundy



Plum\*



Chocolate\*



Mocha\*



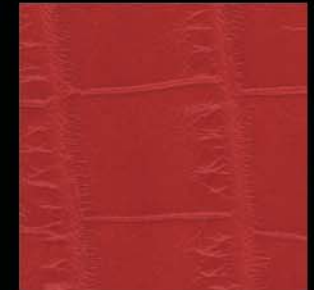
Cowboy Black\*



Gator Sand\*\*



Gator Brown\*\*



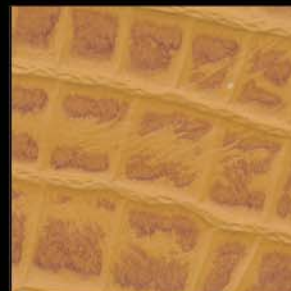
Gator Red\*\*



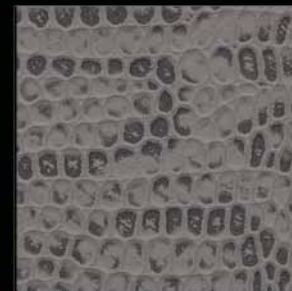
Gator Blue\*



Gator Pink\*\*



Gator Tan\*\*



Snake Gray\*\*



Snake Red\*\*

# ELITE COLLECTION

Our Elite Collection features a distinctive array of cover materials such as novasuède, metals and pearls engineered to have the durability and stain resistance of leather. You can upgrade to any item on our Elite Collection for an additional cost.



Panache Bluebell



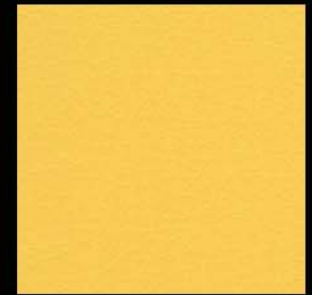
Grandeur Violet



Grandeur Spearmint



Grandeur Certise



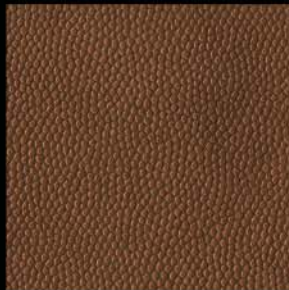
Grandeur Sunshine



Starlite Stainless Steel



Starlite Fawn



Starlite Bronze



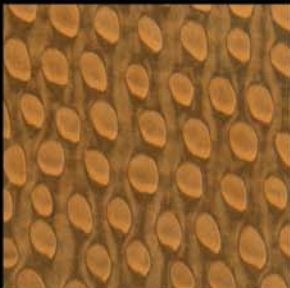
Finesse Copper Kettle



Finesse Muted Gold



Finesse Pearl Pewter



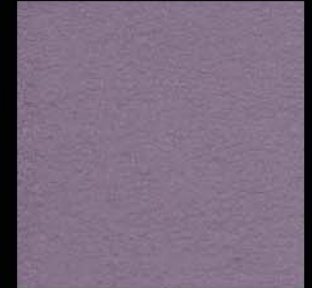
Raindrop Copper Kettle



Raindrop Stainless Steel



Raindrop Pearl Gelato



Sweet Lilac



Crimson



Acorn



Alpine



Sky Blue



Gentle Pine Weave



Bordeaux Weave



Maroon Weave



Sugar Plum Weave



Tristan Red Weave



Sky Blue Weave